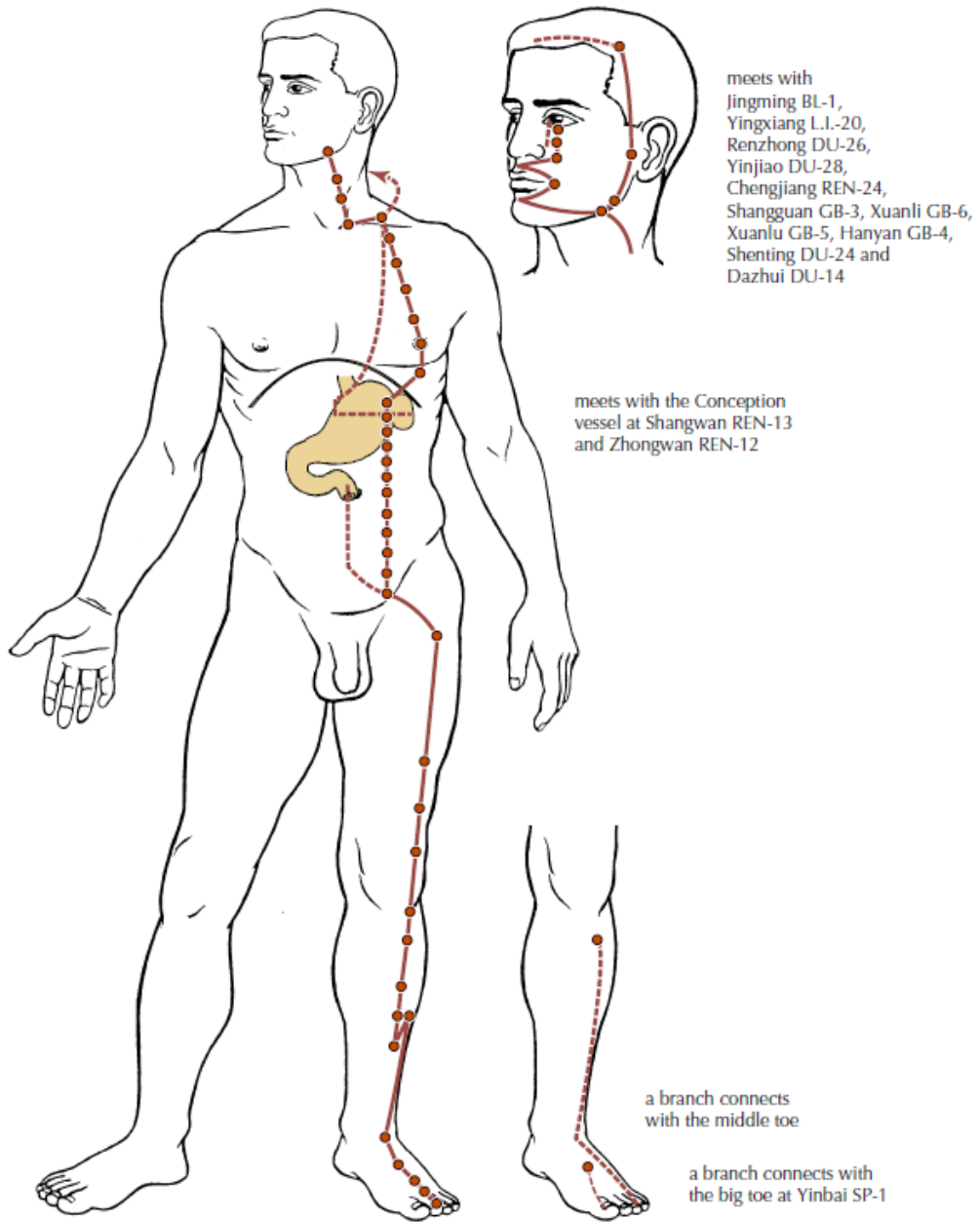
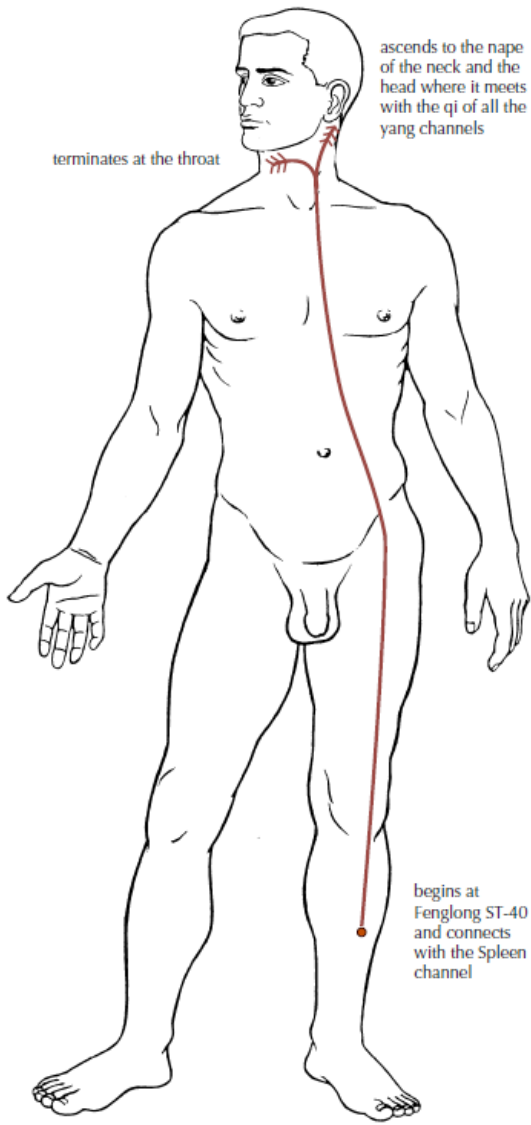
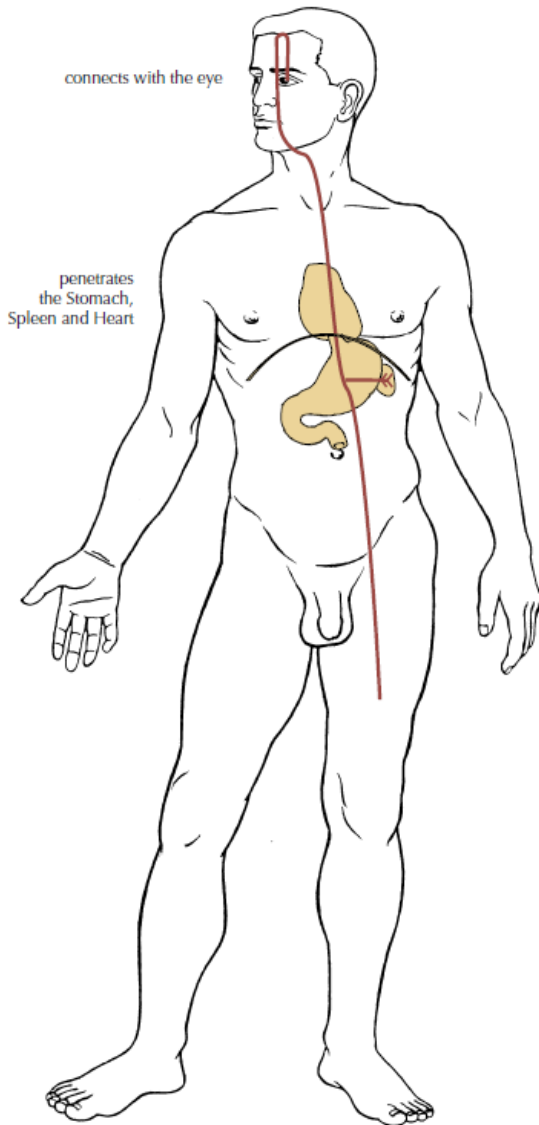


THE STOMACH CHANNEL OF FOOT YANGMING





The Stomach luo-connecting channel



The Stomach divergent channel

STOMACH

FACE	DEADMAN	CAM
Stomach 1	With the eyes looking directly forwards, this point is located directly below the pupil between the eyeball and the infraorbital ridge	<i>With the eyes looking straight forward, the point is directly below the pupil, between the eyeball and the infraorbital ridge.</i>
Stomach 2	With the eyes looking directly forwards, this point is located 1 cun directly below the pupil, in the depression at the infraorbital foramen.	<i>Directly below the pupil, in the depression at the infraorbital foramen.</i>
Stomach 3	With the eyes looking directly forwards, this point is located directly below the pupil, level with the lower border of the ala nasi, on the lateral side of the nasolabial groove.	<i>Directly below the pupil, at the level of the lower border of ala nasi, on the lateral side of the nasolabial groove.</i>
Stomach 4	0.4 cun lateral to the corner of the mouth	<i>Lateral to the corner of the mouth, directly below the pupil</i>

JAW

Stomach 5	Directly anterior to the angle of the jaw, in a depression at the anterior border of the masseter muscle.	<i>Anterior to the angle of mandible, on the anterior border of the attached portion of m. masseter where the pulsation of the facial artery is palpable, in the groove-like depression appearing when the cheek is bulged.</i>
Stomach 6	Approximately 1 finger-breadth anterior and superior to the angle of the jaw at the prominence of the masseter muscle.	<i>One finger-breadth (middle finger) anterior and superior to the lower angle of the mandible where m. masseter is prominent when the teeth are clenched, and depressive when it is pressed.</i>

HEAD

Stomach 7	At the lower border of the zygomatic arch, in the depression anterior to the condyloid process of the mandible.	<i>On the face, anterior to the ear, in the depression between the zygomatic arch and the mandibular notch. This point is located with the mouth closed.</i>
------------------	---	--

	DEADMAN	CAM
Stomach 8	At the corner of the forehead, 4.5 cun lateral to DU 24 and 0.5 cun within the anterior hairline.	<i>On the lateral side of the head, 0.5 cun above the anterior hairline at the corner of the forehead, and 4.5 cun lateral to the midline of the head.</i>

NECK

Stomach 9	Level with the tip of and 1.5 cun lateral to the laryngeal prominence, in the depression between the anterior border of the sternocleidomastoid muscle and the lateral border of the thyroid cartilage. Note: the carotid artery lies just deep to, and can be readily palpated at, the anterior border of the sternocleidomastoid muscle. This point therefore lies between the carotid artery and the lateral border of the thyroid cartilage.	<i>Level with the tip of the Adam's apple where the pulsation of common carotid artery is palpable, on the anterior border of m. sternocleidomastoideus.</i>
Stomach 10	On the neck, at the anterior border of the sternocleidomastoid muscle, midway between ST 9 and ST 11.	<i>At the midpoint of the line joining ST 9 and ST 11, on the anterior border of m. sternocleidomastoideus.</i>
Stomach 11	At the root of the neck, superior to the medial end of the clavicle, directly below ST 9 in the depression between the sternal and clavicular heads of the sternocleidomastoid muscle.	<i>At the superior border of the sternal extremity of the clavicle, between the sternal head and clavicular head of m. sternocleidomastoideus.</i>

CHEST

Stomach 12	In the supraclavicular area, posterior to the superior border of the clavicle and at its midpoint, 4 cun lateral to the midline, on the mamillary line.	<i>In the midpoint of the supraclavicular fossa, 4 cun lateral to the anterior midline.</i>
Stomach 13	At the top of the chest, directly below ST 12, on the inferior border of the clavicle, 4 cun lateral to the midline, on the mamillary line.	<i>At the lower border of the middle of the clavicle, 4 cun lateral to the anterior midline.</i>
Stomach 14	On the chest, in the first intercostal space, 4 cun lateral to the midline (Ren 20), on the mamillary line.	<i>In the first intercostal space, 4 cun lateral to the anterior midline.</i>

	DEADMAN	CAM
Stomach 15	On the chest, in the second intercostal space, 4 cun lateral to the midline (Ren 19), on the mamillary line.	<i>In the second intercostal space, 4 cun lateral to the anterior midline.</i>
Stomach 16	On the chest, in the third intercostal space, 4 cun lateral to the midline (Ren 18) on the mamillary line.	<i>In the third intercostal space, 4 cun lateral to the anterior midline.</i>
Stomach 17	At the centre of the nipple, in the fourth intercostal space, 4 cun lateral to the midline.	<i>In the fourth intercostal space, in the centre of the nipple, 4 cun lateral to the anterior midline.</i>
Stomach 18	Directly below the nipple, in the fifth intercostal space.	<i>On the chest, directly below the nipple, on the lower border of the breast, in the 5th intercostal space, 4 cun lateral to the anterior midline.</i>

ABDOMEN

Stomach 19	On the abdomen, 2 cun lateral to the midline and 6 cun superior to the umbilicus, level with Ren 14.	<i>6 cun above the umbilicus, 2 cun lateral to Ren 14.</i>
Stomach 20	On the abdomen, 2 cun lateral to the midline and 5 cun superior to the umbilicus, level with Ren 13.	<i>5 cun above the umbilicus, 2 cun lateral to Ren 13.</i>
Stomach 21	On the abdomen, 2 cun lateral to the midline and 4 cun superior to the umbilicus, level with Ren 12.	<i>4 cun above the umbilicus, 2 cun lateral to Ren 12.</i>
Stomach 22	On the abdomen, 2 cun lateral to the midline and 3 cun superior to the umbilicus, level with Ren 11.	<i>3 cun above the umbilicus, 2 cun lateral to Ren 11.</i>
Stomach 23	On the abdomen, 2 cun lateral to the midline and 2 cun superior to the umbilicus, level with Ren 10.	<i>2 cun above the umbilicus, 2 cun lateral to Ren 10.</i>
Stomach 24	On the abdomen, 2 cun lateral to the midline and 1 cun superior to the umbilicus, level with Ren 9.	<i>1 cun above the umbilicus, 2 cun lateral to Ren 9.</i>
Stomach 25	On the abdomen, 2 cun lateral to the umbilicus.	<i>2 cun lateral to the centre of the umbilicus.</i>
Stomach 26	On the lower abdomen, 2 cun lateral to the midline and 1 cun inferior to the umbilicus, level with Ren 7.	<i>1 cun below the umbilicus, 2 cun lateral to Ren 7.</i>
Stomach 27	On the lower abdomen, 2 cun lateral to the midline and 2 cun inferior to the umbilicus, level with Ren 5.	<i>2 cun below the umbilicus, 2 cun lateral to Ren 5.</i>

	DEADMAN	CAM
--	----------------	------------

Stomach 28	On the lower abdomen, 2 cun lateral to the midline and 3 cun inferior to the umbilicus, level with Ren 4.	<i>3 cun below the umbilicus, 2 cun lateral to Ren 4.</i>
Stomach 29	On the lower abdomen, 2 cun lateral to the midline and 4 cun inferior to the umbilicus, level with Ren 3.	<i>4 cun below the umbilicus, 2 cun lateral to Ren 3.</i>
Stomach 30	On the lower abdomen, 2 cun lateral to the midline, level with the superior border of the pubic symphysis (Ren 2).	<i>5 cun below the umbilicus, 2 cun lateral to Ren 2.</i>

UPPER LEG

Stomach 31	On the upper thigh, in a depression just lateral to the sartorius muscle, at the junction of a vertical line drawn downward from the anterior superior iliac spine, and a horizontal line drawn level with the lower border of the pubic symphysis.	<i>On the anterior side of the thigh and on the line connecting the anterosuperior iliac spine and the superiolateral corner of the patella, on the level of the perineum when the thigh is fixed, in the depression lateral to the sartorius muscle.</i>
Stomach 32	On the thigh, on a line drawn between the lateral border of the patella and the anterior superior iliac spine, in a depression 6 cun proximal to the superior border of the patella.	<i>On the line connecting the anterior superior iliac spine and lateral border of the patella, 6 cun above the laterosuperior border of the patella.</i>
Stomach 33	On the thigh, on a line drawn between the lateral border of the patella and the anterior superior iliac spine, in a depression 3 cun proximal to the superior border of the patella.	<i>When the knee is flexed, the point is 3 cun above the laterosuperior border of the patella, on the line joining the laterosuperior border of the patella and the anterior superior iliac spine.</i>
Stomach 34	On the thigh, on a line drawn between the lateral border of the patella and the anterior superior iliac spine, in a depression 2 cun proximal to the superior border of the patella.	<i>When the knee is flexed, the point is 2 cun above the laterosuperior border of the patella.</i>

KNEE

Stomach 35	On the knee, in the hollow formed when the knee is flexed, immediately below the patella and lateral to the patellar ligament.	<i>When the knee is flexed, the point is at the lower border of the patella, in the depression lateral to the patellar ligament.</i>
-------------------	--	--

LOWER LEG	DEADMAN	CAM
Stomach 36	Below the knee, 3 cun inferior to ST 35, one finger-breadth lateral to the anterior crest of the tibia.	<i>3 cun below ST 35, one finger-breadth (middle finger) from the anterior border of the tibia.</i>
Stomach 37	On the lower leg, 3 cun inferior to ST 36, one finger-breadth lateral to the anterior crest of the tibia.	<i>6 cun below ST 35 and one finger-breadth (middle finger) from the anterior border of the tibia.</i>
Stomach 38	On the lower leg, midway between the tibio-femoral joint line (level with the popliteal crease) and the prominence of the lateral malleolus, one finger-breadth lateral to the anterior crest of the tibia.	<i>8 cun below ST 35 and one finger-breadth (middle finger) from the anterior border of the tibia.</i>
Stomach 39	On the lower leg, 3 cun inferior to ST 37, one finger-breadth lateral to the anterior crest of the tibia.	<i>9 cun below ST 35 and one finger-breadth (middle finger) from the anterior border of the tibia.</i>
Stomach 40	On the lower leg, midway between the tibio-femoral joint line (level with the popliteal crease) and the lateral malleolus, two finger-breadths lateral to the anterior crest of the tibia (i.e., one finger-breadth lateral to ST 38).	<i>8 cun superior to the tip of the external malleolus, lateral to ST 38, about two finger-breadths lateral to the anterior border of the tibia.</i>

ANKLE

Stomach 41	On the ankle, level with the prominence of the lateral malleolus, in a depression between the tendons of extensor hallucis longus and extensor digitorum longus.	<i>On the dorsum of the foot, at the midpoint of the transverse crease of the ankle joint, in the depression between the tendons of the m. extensor digitorum longus and hallucis longus, approximately at the level of the tip of the external malleolus.</i>
-------------------	--	--

FOOT

Stomach 42	On the dorsum of the foot, in the depression formed by the junction of the second and third metatarsal bones and the cuneiform bones (second and third), 1.5 cun distal to ST 41, on the line drawn between ST 41 and ST 43, at the point where the pulsation of the dorsalis pedis artery may be palpated.	<i>On the dome of the instep of the foot, between the tendons of long extensor muscle of the great toe and long extensor muscle of toes, where the pulsation of the dorsal artery of foot is palpable.</i>
	DEADMAN	CAM

Stomach 43	On the dorsum of the foot, between the second and third metatarsal bones, in a depression 1 cun proximal to ST 44.	<i>In the depression distal to the junction of the second and third metatarsal bones.</i>
Stomach 44	On the dorsum of the foot, between the second and third toes, 0.5 cun proximal to the margin of the web.	<i>Proximal to the web margin between the second and third toes, in the depression distal and lateral to the second metatarsodigital joint.</i>
Stomach 45	On the dorsal aspect of the second toe, at the junction of lines drawn along the lateral border of the nail and the base of the nail, approximately 0.1 cun from the corner of the nail.	<i>On the lateral side of the 2nd toe, 0.1 cun posterior to the corner of the nail.</i>